

**ME & MF House Service Cut-Out Fuse-Links**

Complying with IEC 60269-3:2010 / BS HD 60269-3:2010 / BS 88-3:2010  
(Fuse System C)



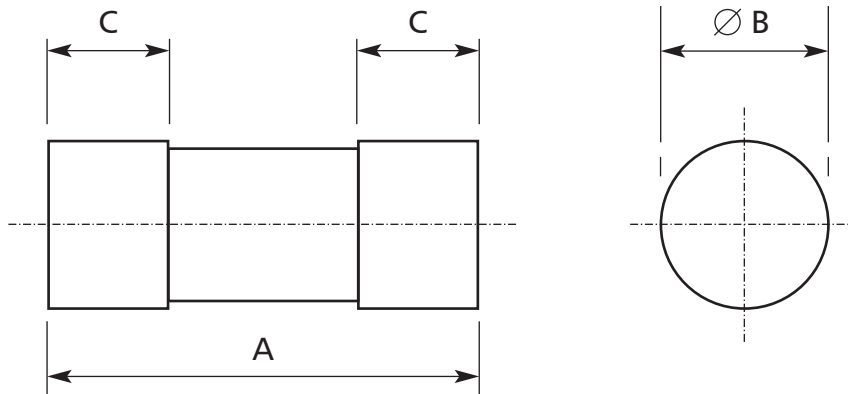
Rated Voltage	415V a.c.
Current ratings	16A to 100A
Rated breaking capacity	80kA
Breaking range & utilisation category	gG
Outline dimensions	SK500
Time/current characteristics	SK501
Power dissipation	SK502
Cut-off characteristics	SK503
I <sup>2</sup> t characteristics	SK504

Lawson type ME and MF Industrial Fuse-Links are for use in single or three phase house service cut outs or similar installations.

## OUTLINE DIMENSIONS

Type "ME & MF" House Service Cut-Out Fuse-Links

Issue: 5 Date: 26.5.2021 Approved TH



Type	List References	Maximum Current Ratings (A)	Dimensions (mm)		
			A	B	C
IIa	ME	100	57	22.23	16
IIb	MF	100	57	30.16	16

IEC 60269-3:2010 / BS HD 60269-3:2010 / BS 88-3:2010 (Fuse System C)  
 Rated Voltage 415 V a.c. Breaking Range and Utilization Category "gG"  
 Also meets requirements of BS 7657

Rated Breaking Capacity - 80 kA at 415 V a.c.

The standardised breaking capacity is 31.5kA at 0.3pf  
 However, to cater for increased fault levels, all Fuse-Links have been  
 ASTA Certified to 80kA at 0.15pf

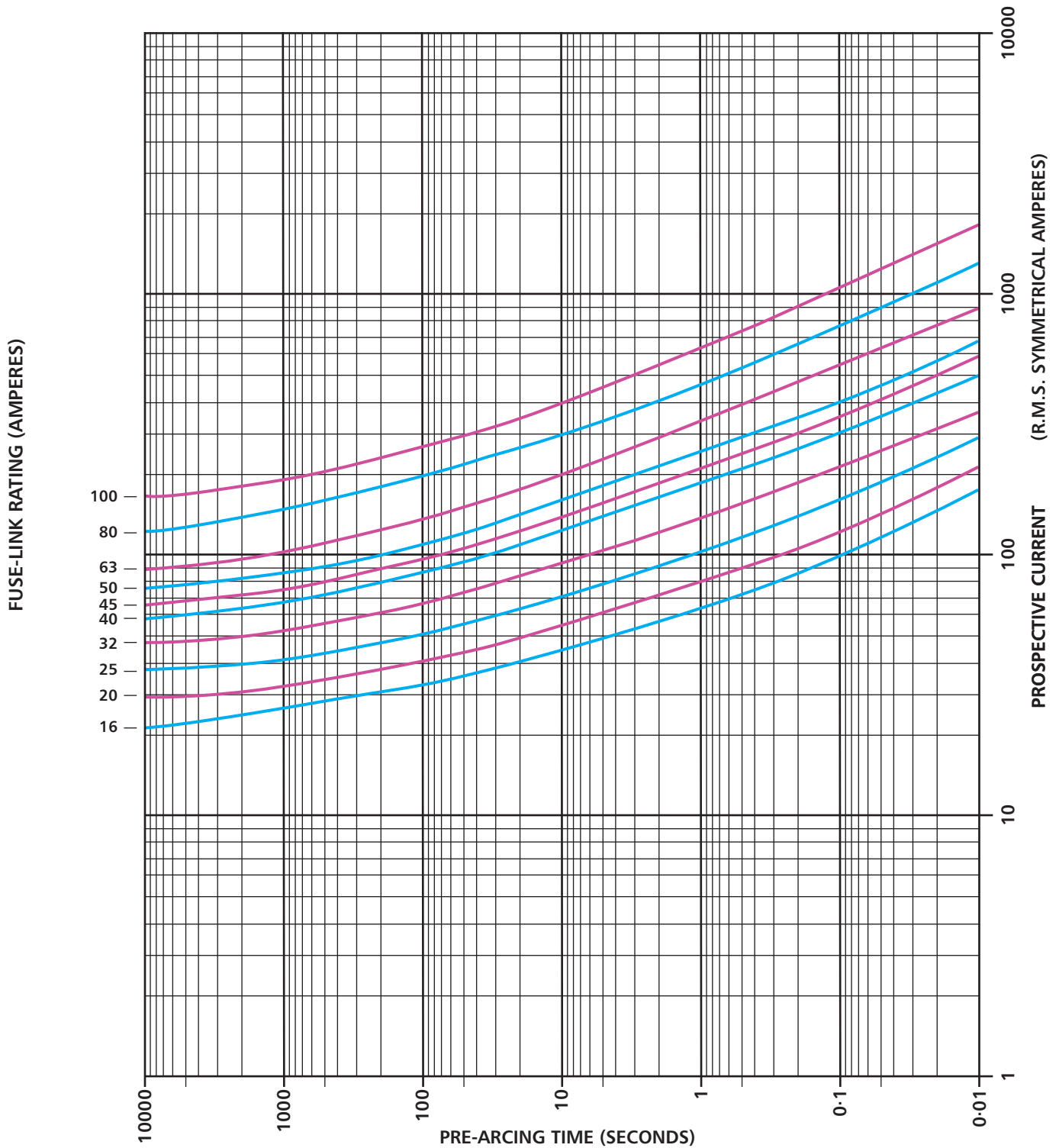
ASTA (20) Certified

Note: ME100A Fuse-Links tested to BS 1361

## TIME / CURRENT CHARACTERISTICS

Type "ME & MF" House Service Cut-Out Fuse-Links

Issue: 5 Date: 26.5.2021 Approved TH

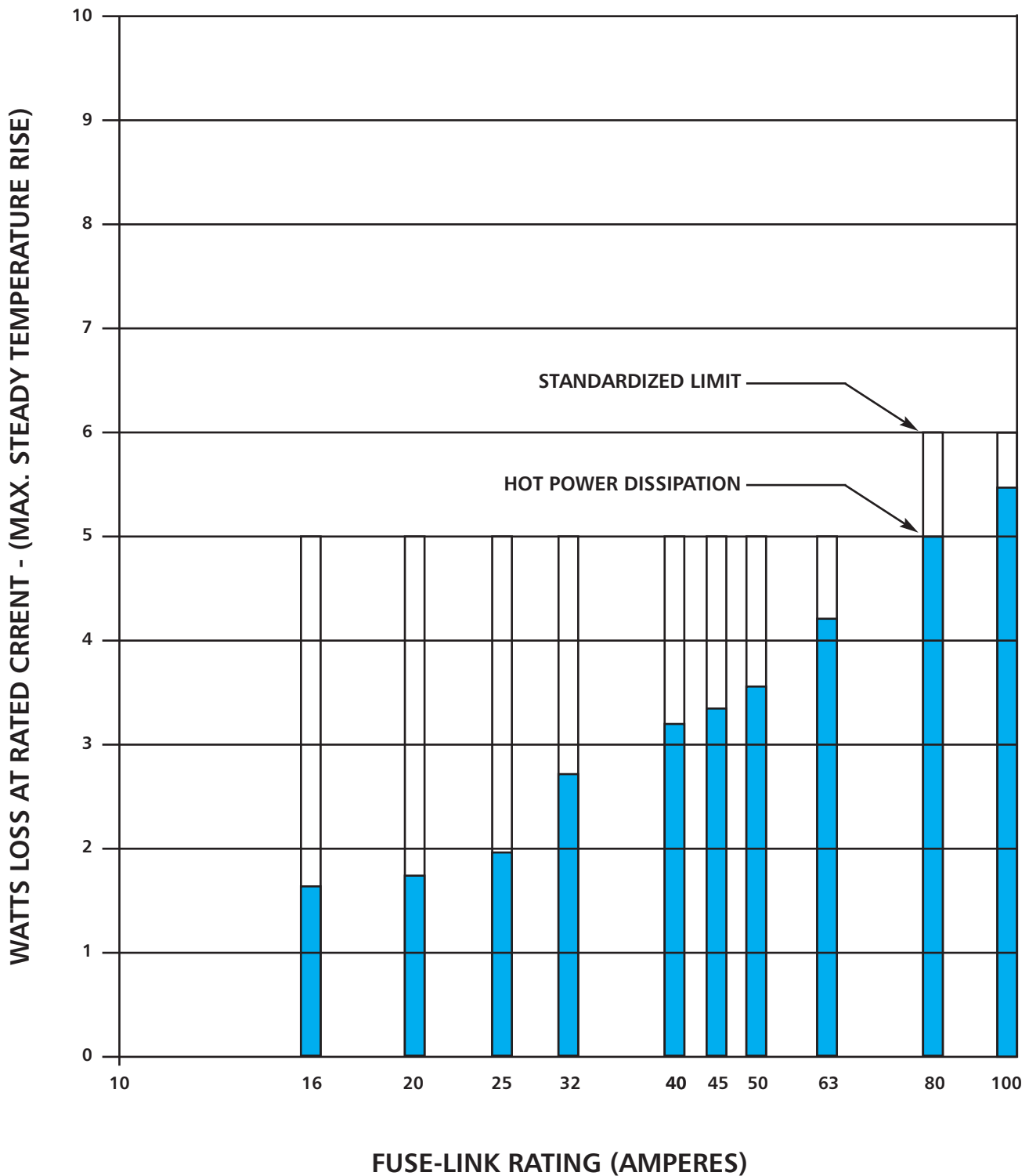


IEC 60269-3:2010 / BS HD 60269-3:2010 (Fuse System C)

Rated Voltage 415 V a.c. Breaking Range and Utilisation Category "gG"

Rated Breaking Capacity - 80 kA At 415 V a.c.

ASTA (20) Certified



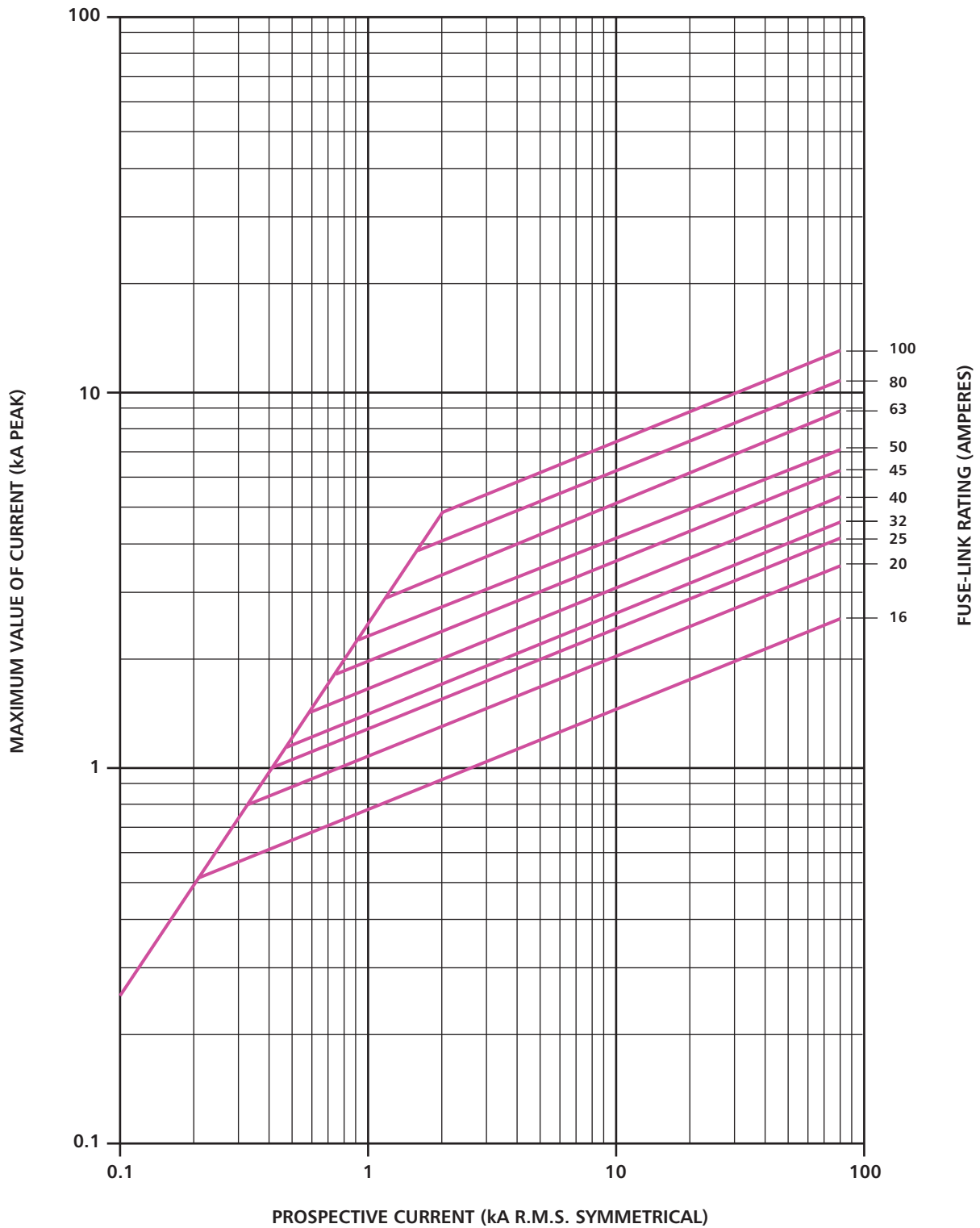
IEC 60269-3:2010 / BS HD 60269-3:2010 / BS 88-3:2010 (Fuse System C)  
 Rated Voltage 415 V a.c. Breaking Range and Utilisation Category "gG"  
 Rated Breaking Capacity - 80 kA At 415 V a.c.

ASTA (20) Certified

## CUT-OFF CHARACTERISTICS

Type "ME & MF" House Service Cut-Out Fuse-Links

Issue: 5 Date: 30.4.2021 Approved TH



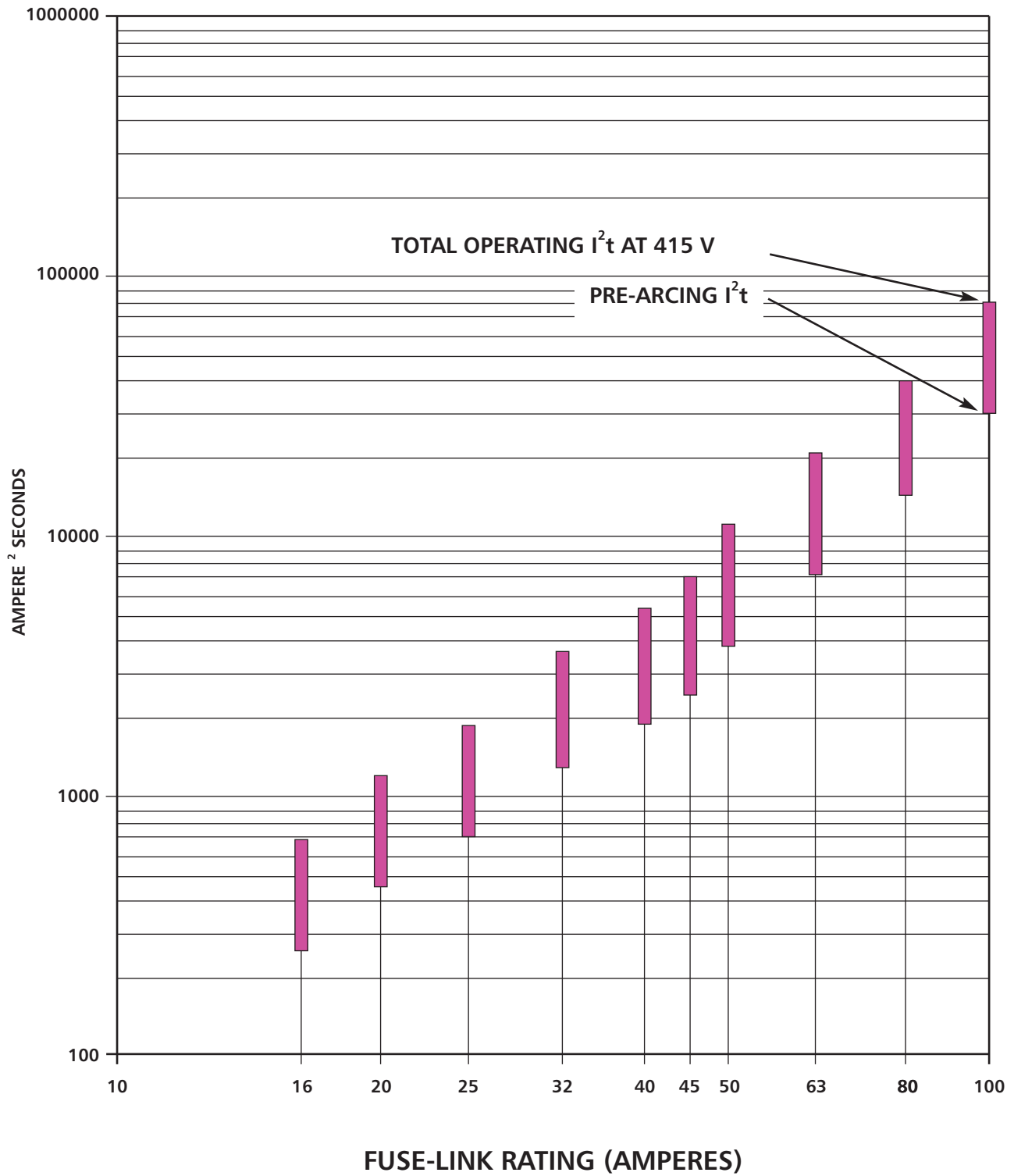
IEC 60269-3:2010 / BS HD 60269-3:2010 / BS 88-3:2010 (Fuse System C)  
 Rated Voltage 415 V a.c. Breaking Range and Utilisation Category "gG"  
 Rated Breaking Capacity 80 kA At 415 V a.c.

ASTA  Certified


## I<sup>2</sup>t CHARACTERISTICS

Type "ME & MF" House Service Cut-Out Fuse-Links

Issue: 5 Date: 30.4.2021 Approved TH



IEC 60269-3:2010 / BS HD 60269-3:2010 / BS 88-3:2010 (Fuse System C)  
 Rated Voltage 415 V a.c. Breaking Range and Utilisation Category "gG"  
 Rated Breaking Capacity - 80 kA At 415 V a.c.

ASTA  Certified